

HAAS
+
SOHN

Sara

Equipment sheet
Fireplace stove

GB

0434315001400e

Introduction

We thank you very much for purchasing our product!

The description of the heating device will inform you in detail about the design, technical specification and operation of the heating device. We recommend you to acquaint yourselves closely with these data. In this way, you will avoid possible faults during the proper assembly and operation.

You will find detailed conditions of installation and operation in General Manual of Operation (included in the scope of the delivery).

Notes in the text

GB



Of utmost importance there are the notes entitled **WARNING**. The notes entitled **WARNING** advise you on **serious danger of damage to the heating device or of an injury**.



The note entitled **Notice** advises you on possible damage to your heating device.



The note entitled **Important** calls your attention to the information important for the operation of your heating device.

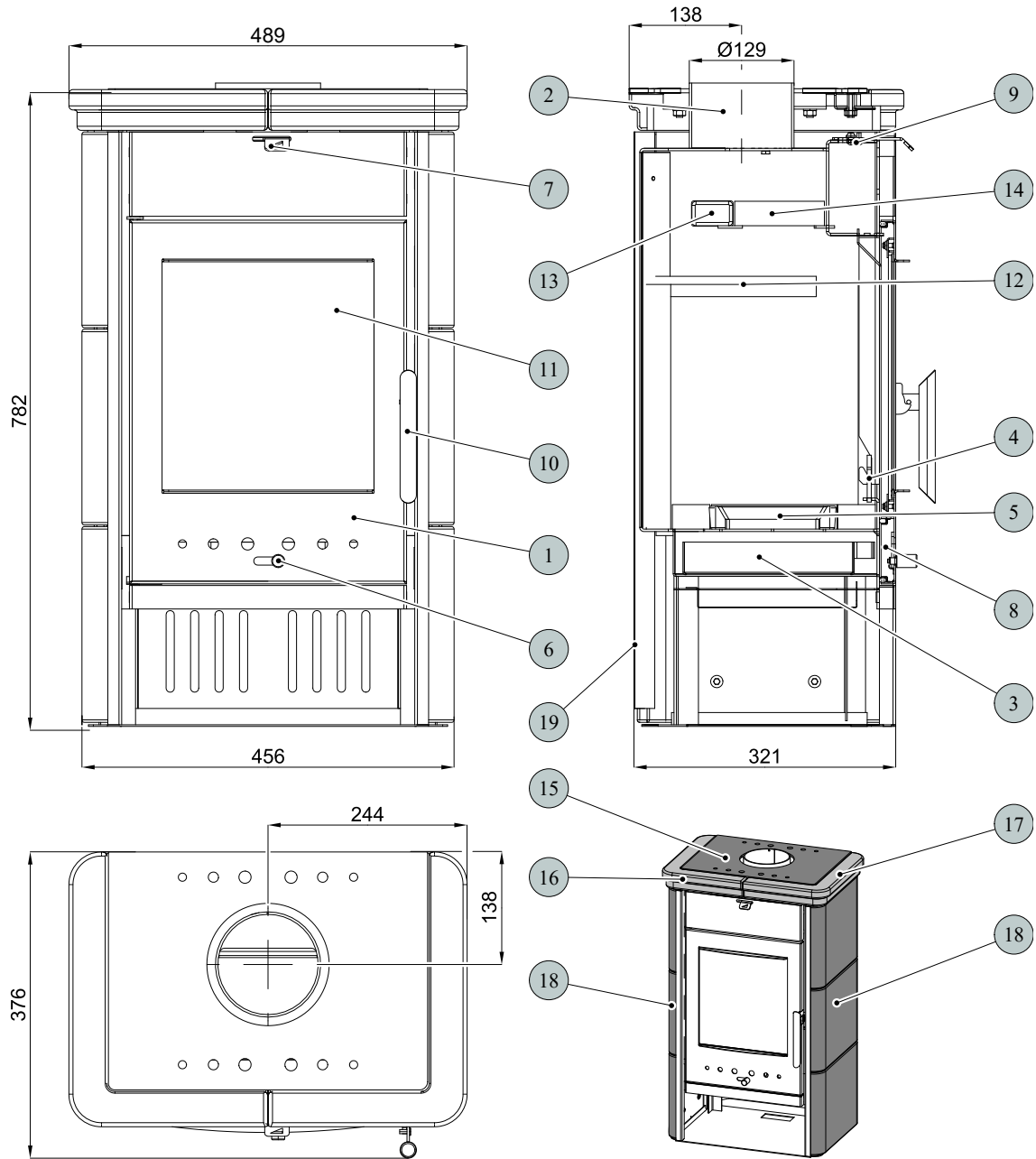


The note itself calls your attention to the information important for the operation of your heating device in general.

Contents

1. Technical description.....	1
1.1. Dimensioned diagram of the fire-box	3
2. Knee-piece of exhaust of combustion products	4

1. Technical description



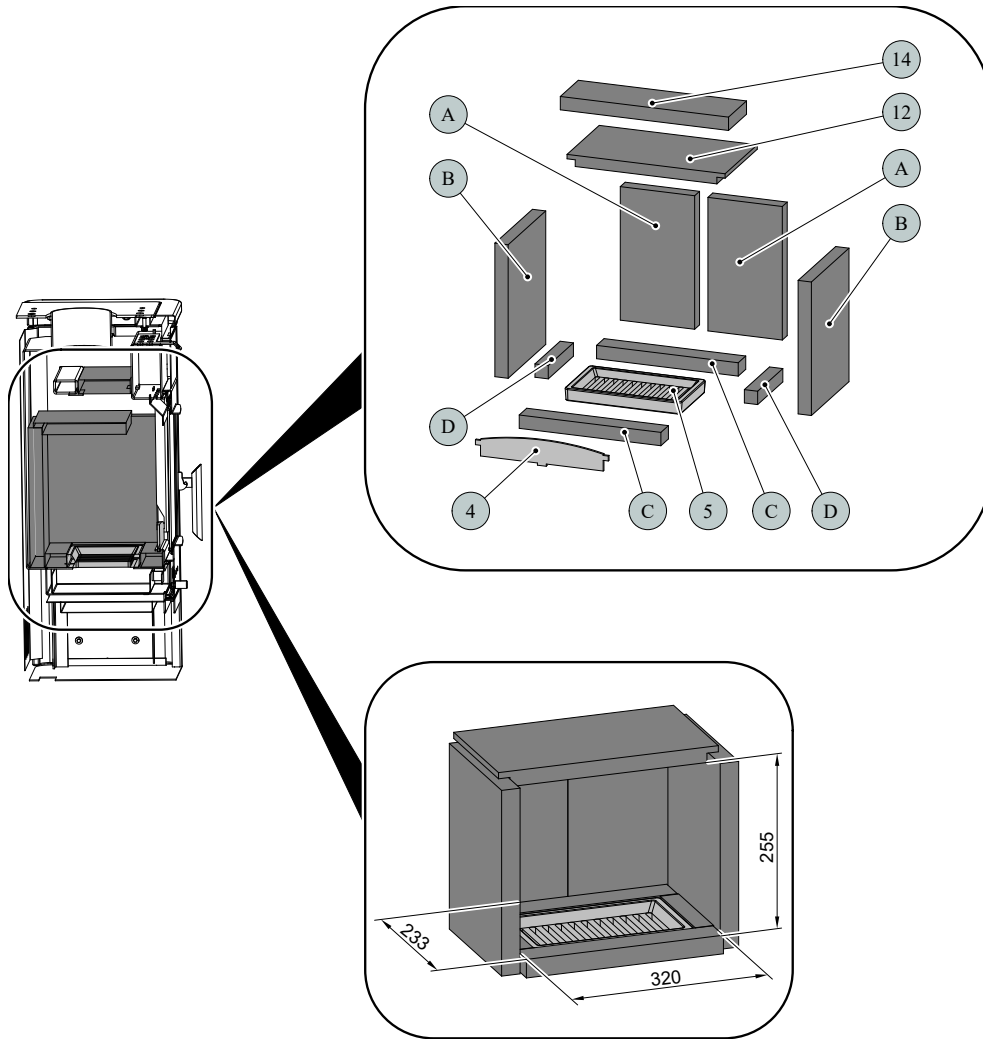
Technical description

GB

Item	Name	pcs	Number of goods
1	Fire-box door/black	1 piece	0434315005300
2	Smoke flue neck/black	1 piece	—
3	Ash pan	1 piece	0432215005600
4	Protection/black	1 piece	0432215006015
5	Grate/black	1 piece	0020100130005
6	Controller of primary air/chrome-plated	1 piece	0082020010005
7	Controller of secondary air/black	1 piece	0434315005001
8	Input of primary air	1 piece	—
9	Input of secondary air	1 piece	—

10	Lever lock of fire-box door	1 piece	0432215007305
11	Refractory glass (285x300)	1 piece	0432215005301
12	Screen loose - lower (25x197x357)	1 piece	0432215005701
13	Screen fixed - upper	1 piece	—
14	Screen loose - upper (30x110x380)	1 piece	0432215005702
15	Lid/black	1 piece	0434315005111
16	Upper ledge - left/cappuccino	1 piece	0434315026001
16	Upper ledge - left/honey	1 piece	0434315016001
17	Upper ledge - right/cappuccino	1 piece	0434315026002
17	Upper ledge - right/honey	1 piece	0434315016002
18	Lateral lining/cappuccino	2 piece	0434315026100
18	Lateral lining/honey	2 piece	0434315016100
19	Rear cover	1 piece	0434315005010
—	Sealing cord of the door 8 mm	1800 mm	0040300080005
—	Sealing cord of the glass 10x4 mm	1200 mm	0040210040005
—	Sealing cord of glass holders 8x2 mm	160 mm	0040208020006

1.1. Dimensioned diagram of the fire-box



Item	Name	pcs	Number of goods
4	Protection/black	1 piece	0432215006015
5	Grate/black	1 piece	0020100130005
12	Screen loose — lower (25x197x357)	1 piece	0432215005701
14	Screen loose — upper (30x110x380)	1 piece	0432215005702
A	Brick 30x168x300	2 piece	0434315005501
B	Brick 30x227x300	2 piece	0432215005502
C	Brick 30x46x320	2 piece	0432215005503
D	Brick 30x30x154	2 piece	0432215005505

2. Knee-piece of exhaust of combustion products



Note

The knee-piece of exhaust of combustion products is delivered as optional accessory

