



JK 04 703 15 00 14 02
28112011c-GB

HAAS+SOHN

TECHNICAL DOCUMENTATION

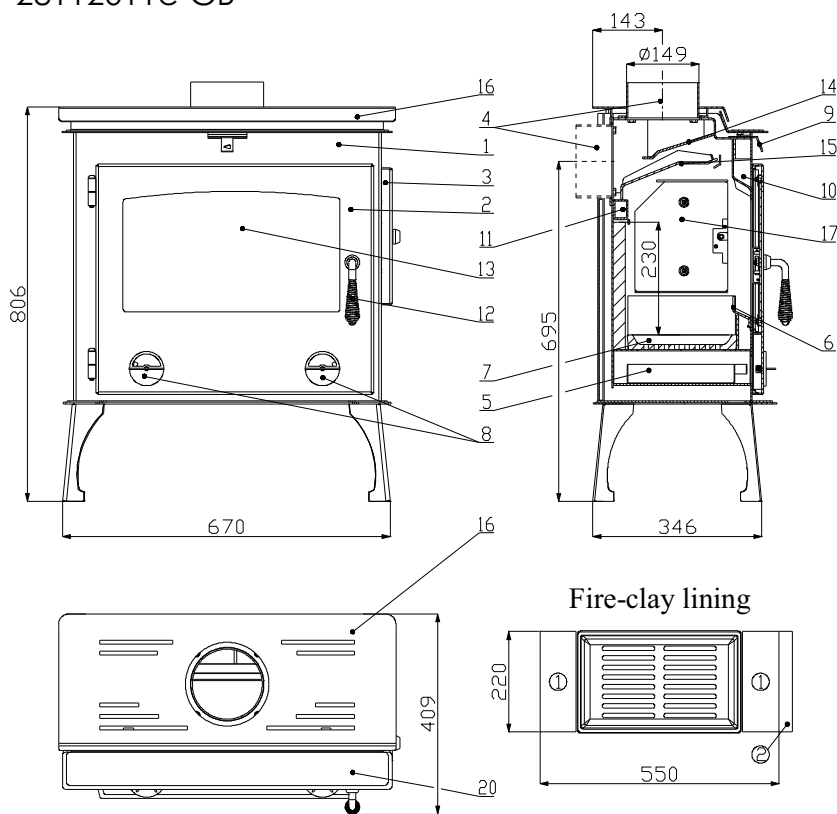
Arctic





JK 04 703 15 00 14 02
28112011c-GB

TECHNICAL SHEET of the fireplace stove **Arctic**



Suitable fuel:

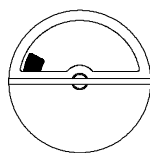
As concerns suitable fuel to be employed, see the chapter **2.2 Fuel** in the General Manual of Operation.

Proper operation:

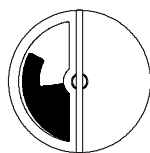
As concerns the proper and safe operation of the fireplace stove, see the chapters **2. Description of the combustion process** and **5. Operating instructions** in the General Manual of Operation.

Fire-clay No.	Dimension	Item No.
1	30x80x220	0470315005510
2	30x110x220	0470315005511

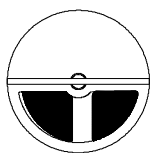
Air regulator View of the left regulator



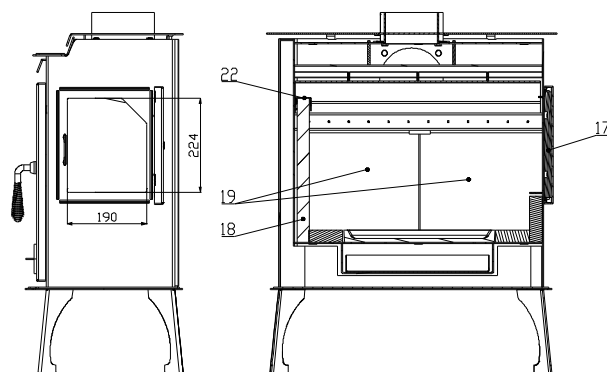
blockwood
open 10 %



ecological briquettes
open 60 %



coal briquettes
open 90 %



TECHNICAL DESCRIPTION:

Position	Name	Item No.	Position	Name	Item No.
1	Stove body	-	22	Holder of the vermiculite	0420015107001
2	Fire-box door	0470315005300			
3	Lateral fire-box door	0470315005310			
4	Smoke flue neck	0470315007007			
5	Ash pan	0417015115600			
6	Protection	0470315007001			
7	Cast-iron grate	0020100100006			
8	Controller of primary and secondary air I	0470215005302			
9	Controller of secondary air II	0470315007005			
10	Intake of secondary air	-			
11	Intake of tertiary air	-			
12	Lever lock of the fire-box door	0470315006100			
13	Refractory glass	0470315005301			
14	Upper lip - fixed	-			
15	Lower lip - loose	0470315007700			
16	Lid	0470315007800			
17	Plate (vermiculite)	0470315005311			
18	Lateral plate (vermiculite)	0470315005712		Sealing cord of the door 12 mm (2570 mm)	0040012120005
19	Rear plate (vermiculite)	0470315005711		Sealing cord of the side door 12 mm (980 mm)	0040012120005
20	Lid 1	0470315007810		Sealing cord of the glass 10x4 (1430 mm)	0040210040005
21	Blind flange	0470315007002		Glass holder sealing rope 8x2 mm (96 mm)	0040208020005



TECHNICAL INFORMATION

INSTRUCTIONS FOR THE CONTROL OF COMBUSTION PROCESS:

Fuel	Output of the heating device							
	100%	33%	100%	33%	100%	33%	100%	33%
	Amount of fuel		Primary and secondary air I		Secondary air II		Tertiary air	
Wood logs	3,6 kg/h	1,2 kg/h	open 10 %	open 10 %	open 100 %	open 50%	non-controllable	
Ecological briquettes	3,1 kg/h	1 kg/h	open 60 %	open 50 %	open 100%	open 50%	non-controllable	
Coal briquettes	2,3 kg/h	0,8 kg/h	open 100 %	open 50 %	closed	closed	non-controllable	

TECHNICAL DATA:	Wood logs	Ecological briquettes	Coal briquettes		
Achieved heat output (100%)	12 kW	10,3 kW	10,6 kW	Height	806 mm
Nominal heat output	12 kW	10 kW	10 kW	Width	670 mm
Reduced heat output (33%)	4 kW	3,4 kW	3,5 kW	Depth	346 mm
Maximum stoking amount of the fuel	3,6 kg/hod	3,1 kg/hod	2,3 kg/hod	Diameter of the smoke flue	150 mm
Average temperature of combustion products behind the smoke flue neck	331 °C	392 °C	344 °C	Weight	92 kg
Maximum mass flow of dry combustion products	10,2 g/s	9,3 g/s	13,9 g/s	Min. chimney stack draught in the smoke flue neck	12 Pa
Energy efficiency	79,7 %	74 %	68,2 %	Heating capacity (middle heat losses) at 12 kW	cca. 216 m ³
Average concentration of CO ₂	10 %	9,9 %	7 %	Controllable output	3,4 - 12 kW
Concentration of CO in combustion products at 13 % O ₂	0,04 %	0,2 %	0,1 %		
The amount of combustion air at nominal output	10 m ³ /kg	10 m ³ /kg	20 m ³ /kg		
Tested in compliance with ČSN EN 13240:2002			CE		

DIMENSIONED DIAGRAM OF THE FIREPLACE STOVE WITH INSTALLATION OF KNEE-PIECE FOR EXHAUST OF COMBUSTION PRODUCTS, DELIVERED AS OPTIONAL ACCESSORY

